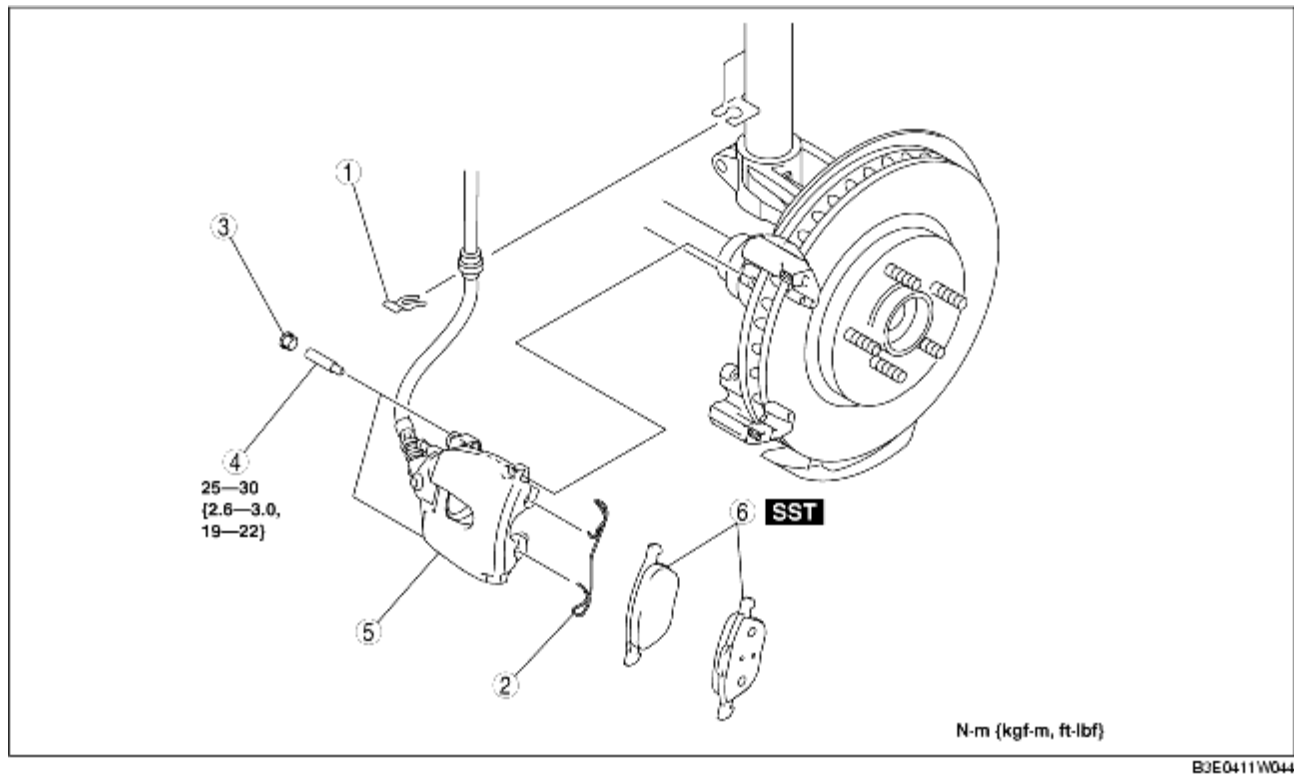


DISC PAD (FRONT) REPLACEMENT

B3E041133630W02

1. Remove in the order indicated in the table.
2. Install in the reverse order of removal.
3. After installation, pump the brake pedal a few times and verify that the brakes do not drag.



B3E0411W044

1	Clip
2	Retaining clip
3	Cap
4	Bolt
5	Caliper
6	Disc pad (See Disc Pad Installation Note.)